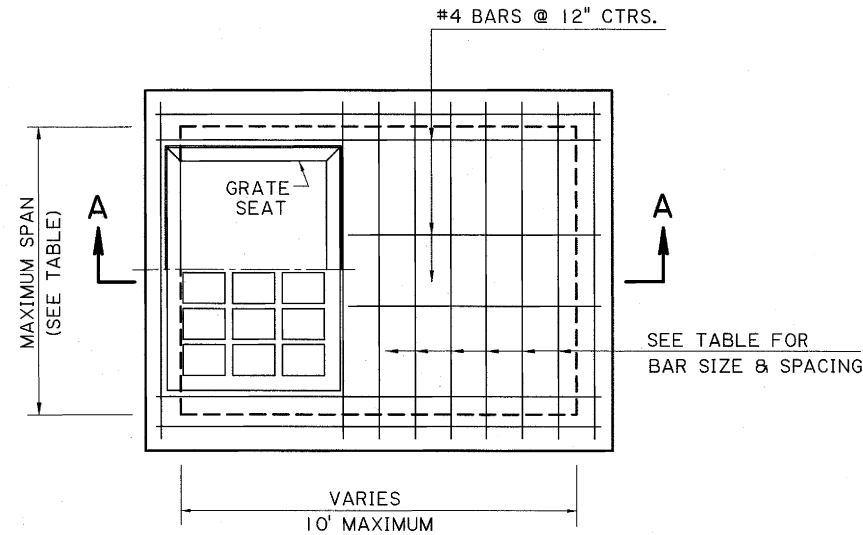


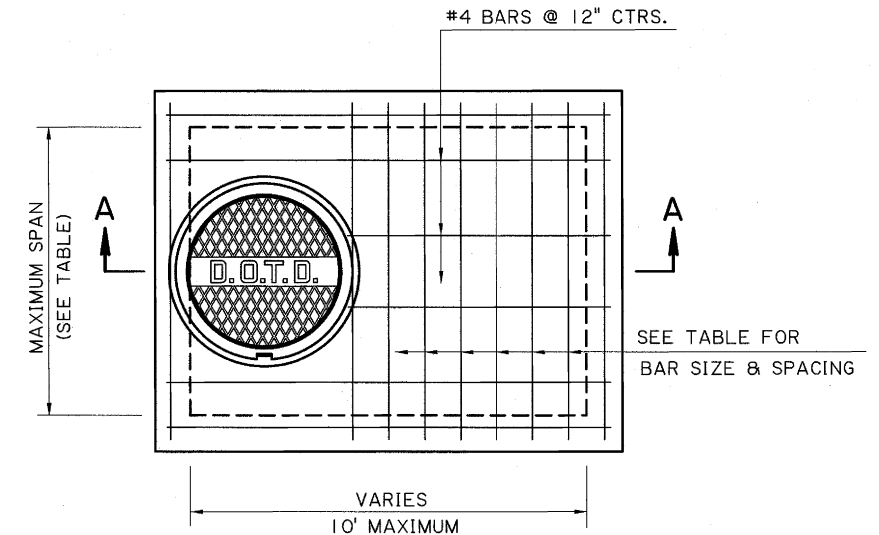
SECTION EXISTING STRUCTURE

REMOVE EXISTING CATCH BASIN OR MANHOLE TO THIS LINE. IF CONCRETE, EXISTING BARS TO BE EXPOSED, CLEANED, AND BENT AS SHOWN IN SECTION A-A.



CATCH BASIN PLAN

SHOWING NEW CONSTRUCTION GRATE TO BE TYPE "B" OR "C". TYPE "B" SHOWN.*



MANHOLE PLAN

SHOWING NEW CONSTRUCTION

* TYPE "B" AND "C" GRATES SHOULD NOT BE USED IN THE TRAVEL LANE. TYPE "B" GRATE IS TO BE USED WHERE NO PEDESTRIAN TRAFFIC AND NO VEHICULAR TRAFFIC IS EXPECTED. (DITCHES, ETC.) TYPE "C" GRATE IS TO BE USED WHERE PEDESTRIAN TRAFFIC AND/OR LIGHT VEHICULAR TRAFFIC IS EXPECTED. (DRIVEWAYS, SHOULDERS, ETC.)

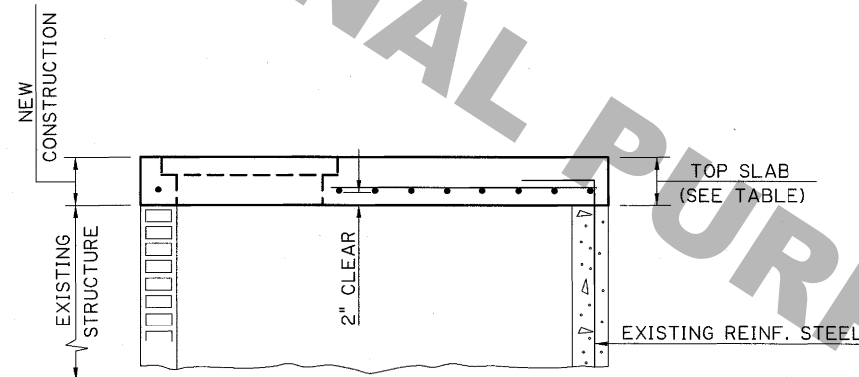
GENERAL NOTES:

DIMENSIONS RELATING TO REINFORCED STEEL ARE TO BARS CENTERS.

FOR DETAILS OF CATCH BASIN GRATE AND SEAT, SEE STD. PLAN MC-01 (TYPE B OR C).

FOR DETAILS OF MANHOLE CAST IRON COVER AND SEAT, SEE STD. PLAN MC-01 (TYPE K OR K1).

PROJECT SPECIFICATIONS FOR MANHOLES, JUNCTION BOXES AND CATCH BASINS SHALL APPLY.



SECTION A-A

SHOWING NEW CONSTRUCTION FOR CATCH BASIN OR MANHOLE (FOR CONCRETE OR BRICK WALL)

MAXIMUM SPAN	TOP SLAB	BAR SIZE	BAR SPACING
4'	8"	#5	8"
6'	8 1/2"	#5	6"
8'	9 1/2"	#5	5"
9'	10 1/2"	#5	4"

ADJUSTMENT/CONVERSION OF EXISTING CATCH BASINS OR MANHOLES

- NOTE:
- 1) FOR ALL CATCH BASIN ADJUSTMENTS, THIS DETAIL SHOULD BE INCLUDED IN THE PLANS AND PAID FOR WITH APPROPRIATE PAY ITEMS.
 - 2) FOR ALL CATCH BASIN AND MANHOLE CONVERSIONS (CATCH BASIN TOP TO MANHOLE TOP OR MANHOLE TOP TO CATCH BASIN TOP), THIS DETAIL SHOULD BE INCLUDED IN THE PLANS ALONG WITH THE APPROPRIATE STANDARD PLAN/SPECIAL DETAIL TO CONSTRUCT THE NEW TOP. IF NO STANDARD PLAN/SPECIAL DETAIL IS INCLUDED, THE TOP IS TO BE BUILT AS SHOWN ON THIS DETAIL. ALL CONVERSIONS SHOULD BE PAID FOR WITH APPROPRIATE PAY ITEMS.
 - 3) FOR ALL MANHOLE ADJUSTMENTS GREATER THAN 7", THIS DETAIL SHOULD BE INCLUDED IN THE PLANS AND PAID FOR WITH APPROPRIATE PAY ITEMS.
 - 4) FOR ALL MANHOLE ADJUSTMENTS LESS THAN OR EQUAL TO 7", MANHOLE ADJUSTMENT RINGS MAY BE USED. SHOULD BE PAID FOR WITH APPROPRIATE PAY ITEMS AND NO DETAIL IS NEEDED IN THE PLANS. REFER TO STANDARD PLAN MC-01.
 - 5) FOR ALL CATCH BASIN/MANHOLE ADJUSTMENTS, CLEAN EXISTING GRATES/FRAMES AS PER PROJECT SPECIFICATIONS FOR MANHOLES, JUNCTION BOXES AND CATCH BASINS.

SHEET NUMBER

PARISH CONTROL SECTION STATE PROJECT

DESIGN CHECK PAA MH KAJ MH 5-7-19 OF 1

DETAIL CHECK REVIEW

STATE OF LOUISIANA REGISTERED PROFESSIONAL ENGINEER CIVIL ENGINEERING

MITRA HASHEMIEH REG. No. 28046

5/7/2019

APPROVED BY CHIEF ENGINEER: *Mitra Hashemieh*

DATE: 10/30/19

STATE OF LOUISIANA REGISTERED PROFESSIONAL ENGINEER

ADJUSTMENT/CONVERSION OF EXISTING CATCH BASINS OR MANHOLES

CB-ADJUST

DOTD LOUISIANA DEPARTMENT OF TRANSPORTATION & DEVELOPMENT

HYDRAULICS DESIGN